

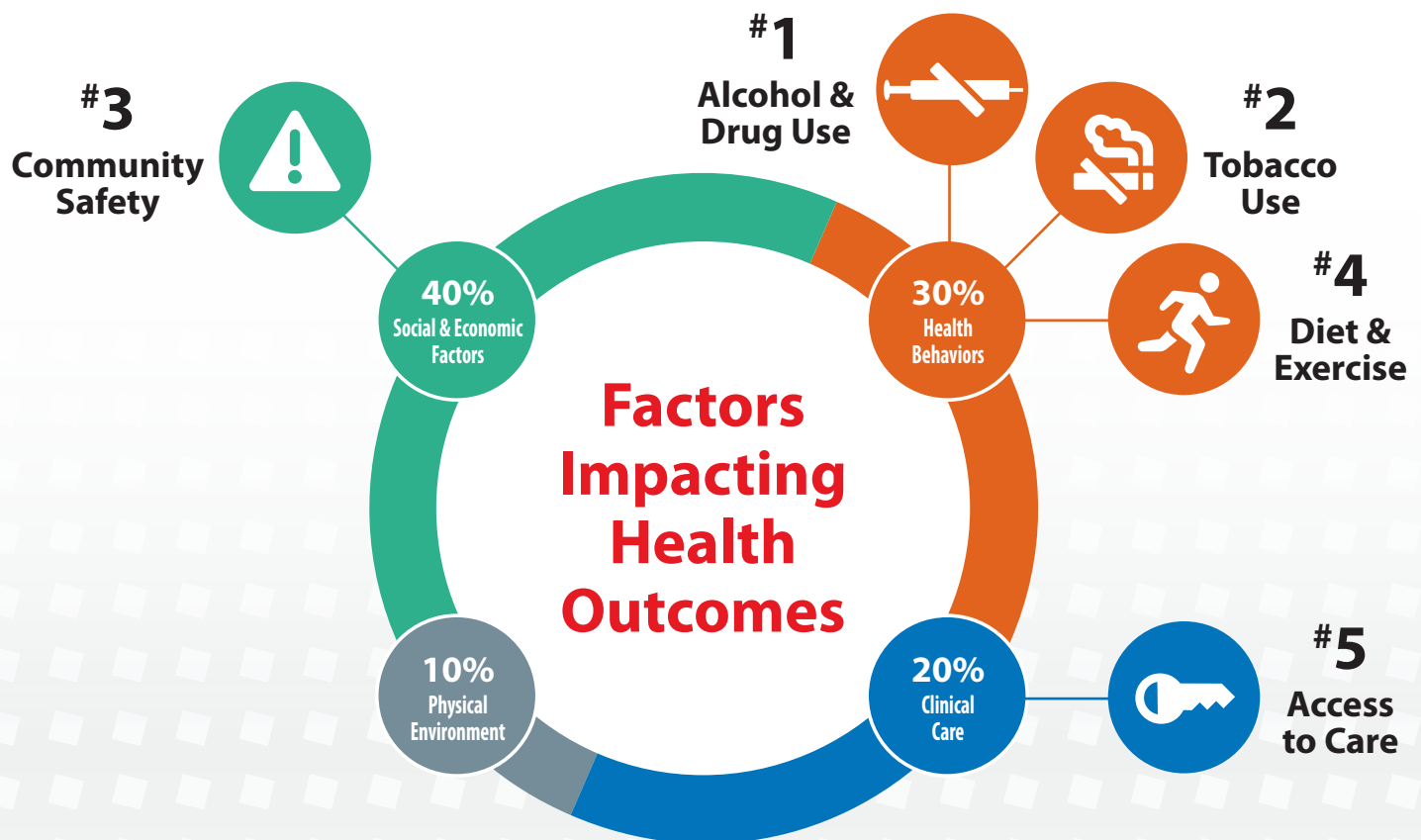
July 1, 2016 – June 30, 2019

## Community Health Needs Assessment

# UofL Hospital is dedicated

to improving the community's health and well-being of people through research, education, clinical care, and community service. Our triennial Community Health Needs Assessment uses a framework from the Robert Wood Johnson Foundation's County Health Rankings to identify and prioritize health needs.

## 5 Significant Health Needs in Jefferson County to be addressed by UofL Hospital



**UofL** Hospital

To read our full community health needs assessment, visit:  
[UofLHospital.org/community-health-needs-assessment](http://UofLHospital.org/community-health-needs-assessment)